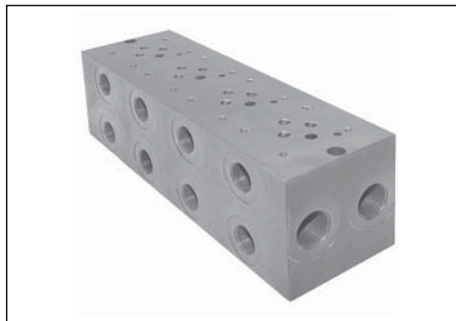


MANIFOLD BLOCKS type BP

- NS 6, 10
- to 350 bar

- Connecting dimensions to DIN 24340, ISO 4401
- Port type; BSPP: ISO 1179-1
- Mounting position unrestricted (valve axis preferably horizontal)
- Because of the large drilling diameters the pressure drop through the manifolds is very low.



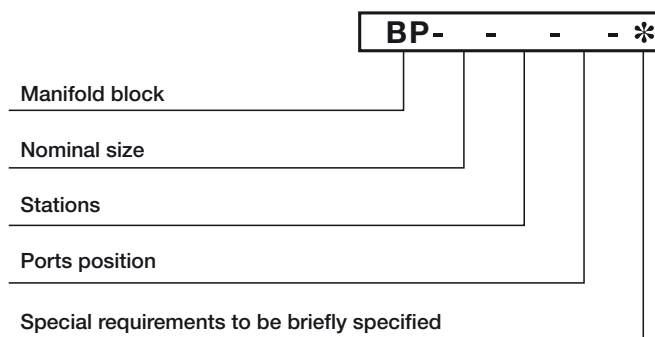
BP-6-4-S

Description

Manifold blocks serve for transmission of hydraulic fluid from source to valves. On the block can be two or up to seven valves (NS 10) or up to eight valves (NS 6) mounted in parallel connection.

Manifold blocks are used for easily realizing of hydraulic circuits without piping between valves and minimal overall dimensions.

Ordering code



Nominal size

Size 6 (CETOP 3) = 6

A + B = G3/8; spotface \varnothing 28/1

P + T = G1/2; spotface \varnothing 34/1

Size 10 (CETOP 5) = 10

A + B = G1/2; spotface \varnothing 34/1

P = G3/4; spotface \varnothing 42/1

T = G1 ; spotface \varnothing 47/1

Stations

1 station = 1 5 station = 5

2 stations = 2 6 stations = 6

3 stations = 3 7 stations = 7

4 stations = 4 8 stations = 8

* for NS 10 up to 7 stations

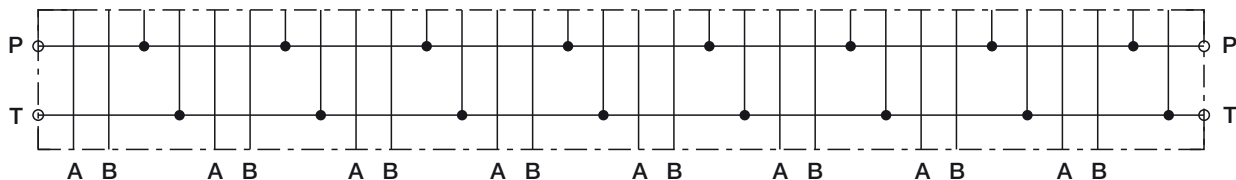
Ports position

Rear = no desig.

Side = S

Note: Max. pressure depend on type of used seals.

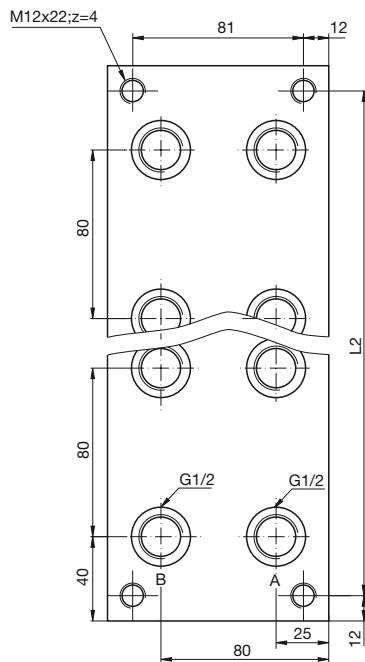
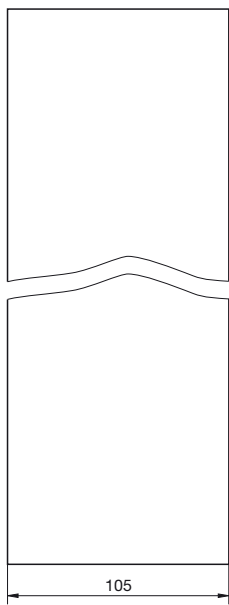
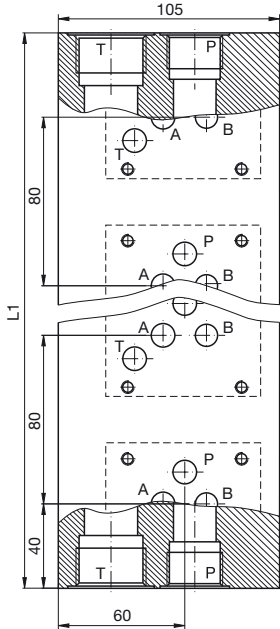
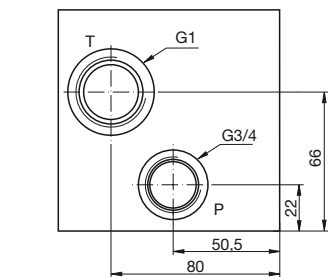
Symbol



Dimensions (mm)

BP-10-....-....

Code	Nominal size	Stations	L1 (mm)	L2 (mm)	Ports size			Mass (kg)
					P	A, B	T	
BP-10-1	10	1	80	56	G3/4	G1/2	G1	5,9
BP-10-2	10	2	160	136	G3/4	G1/2	G1	11,8
BP-10-3	10	3	240	216	G3/4	G1/2	G1	17,7
BP-10-4	10	4	320	296	G3/4	G1/2	G1	23,5
BP-10-5	10	5	400	376	G3/4	G1/2	G1	29,4
BP-10-6	10	6	480	456	G3/4	G1/2	G1	35,3
BP-10-7	10	7	560	536	G3/4	G1/2	G1	41,2



BP-10-....-S

Code	Nominal size	Stations	L1 (mm)	L2 (mm)	Ports size			Mass (kg)
					P	A, B	T	
BP-10-1	10	1	80	56	G3/4	G1/2	G1	5,9
BP-10-2	10	2	160	136	G3/4	G1/2	G1	11,8
BP-10-3	10	3	240	216	G3/4	G1/2	G1	17,7
BP-10-4	10	4	320	296	G3/4	G1/2	G1	23,5
BP-10-5	10	5	400	376	G3/4	G1/2	G1	29,4
BP-10-6	10	6	480	456	G3/4	G1/2	G1	35,3
BP-10-7	10	7	560	536	G3/4	G1/2	G1	41,2

