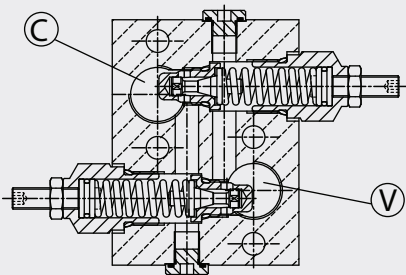
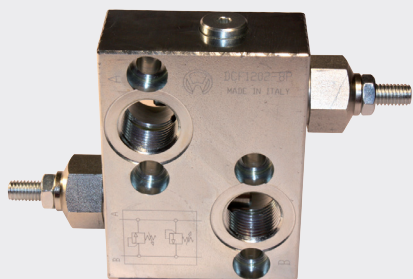


DCF Valvole antiurto doppie incrociate

Double cross line direct acting relief valves



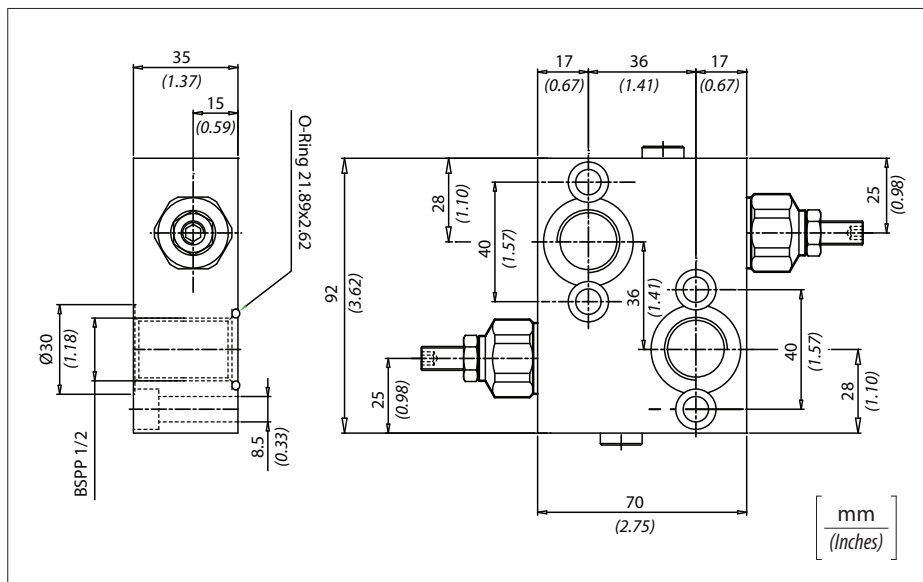
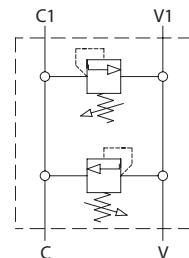
Dati tecnici

Technical data

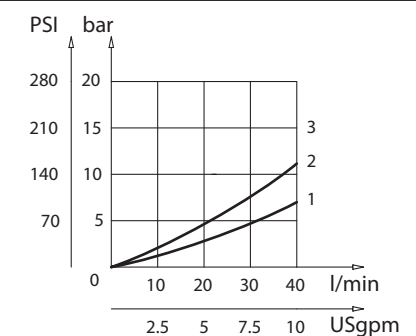
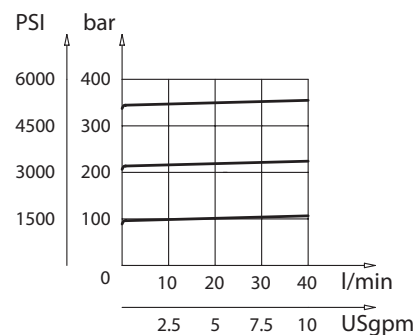
Olío idraulico Mineral oil	ISO 6743/4 DIN 51524
Viscosità fluido Fluid viscosity	10-500 mm ² /s 45 to 2000 ssu (6 to 420 cSt)
Classe di contaminazione max con filtro Max contamination index with filter	ISO 4406:1999 Classe 19/17/14
Temperatura del fluido Fluid temperature	-20°C +80°C -4°F + 176°F
Temperatura ambiente Ambient temperature	-20°C +50°C -4°F + 122°F

È indispensabile l'utilizzo di un filtro (filtrazione consigliata 15 micron) per proteggere la valvola

It is necessary a filter use to protect the valve (advised filtration 15 micron)



Perdite di carico Pressure drops



Codice ordinazione / Ordering code

DCF - X - Y

X	Dimensione / Size
120	BSPP 1/2
7814	7/8 14UNF
2215	M22x1.5

Y	Molla Spring	Incremento pressione al giro Press. increase
1	10/40 bar (145/600 PSI) max	12 bar/al giro (175 PSI/turn)
2	20/210 bar (290/3000 PSI) max	30 bar/al giro (435 PSI/turn)
3	70/350 bar (1000/5000 PSI) max	65 bar/al giro (940 PSI/turn)

Caratteristiche tecniche

Technical performances

Codice Code	A	Portata max Max Flow l/min - USgpm	Pressione Max Max pressure bar / PSI	Peso approssimativo / Kg Approx weight / lb	Valvola tipo Type of valve
DCF120	BSPP 1/2				
DCF7814	7/8 - 14 UNF	40 (10.5)	350 (5000)	1,5 (3.3)	VMD40
DCF2215	M22 x 1,5				