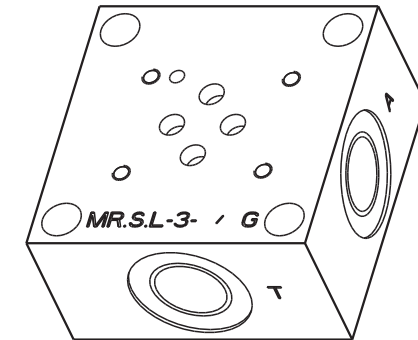
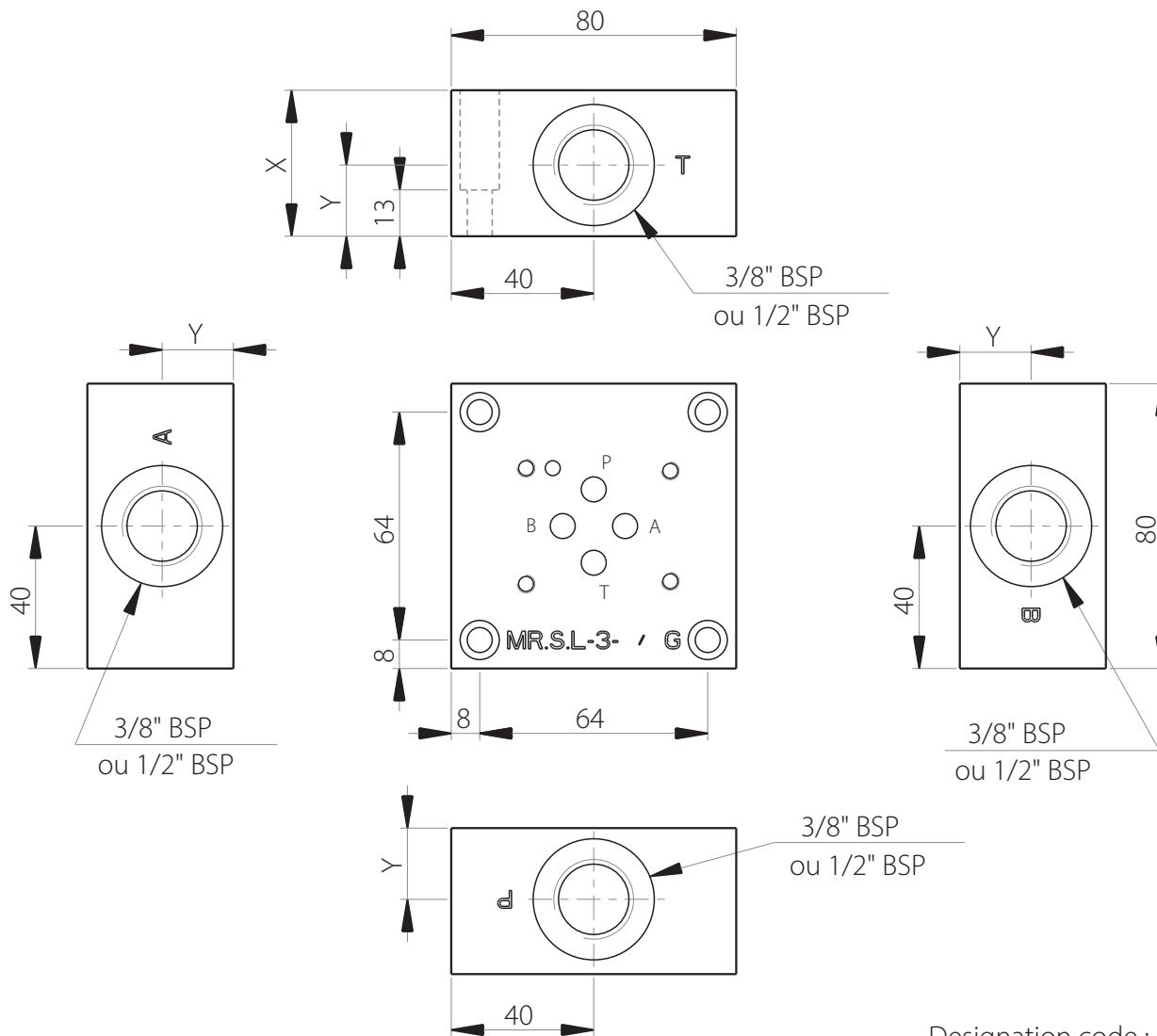
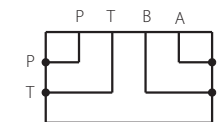


# MRSL3

Side ports subplate  
CETOP 3 / NG6



| Ports | X  | Y  | (kg) |
|-------|----|----|------|
| 3/8"  | 35 | 17 | 1.40 |
| 1/2"  | 41 | 20 | 1.56 |



## Technical specifications

|           |  |
|-----------|--|
| Material  | GGG250   |
| Pressure  | 350 bar max  |
| Flow rate | 60 L/min max (3/8" BSP)<br>80 L/min max (1/2" BSP) |

Designation code :

MR . S . L - 3 - \* G

MECABOR

Subplate

Side ports

CETOP 3

G : ports BSP

3/8"  
1/2"