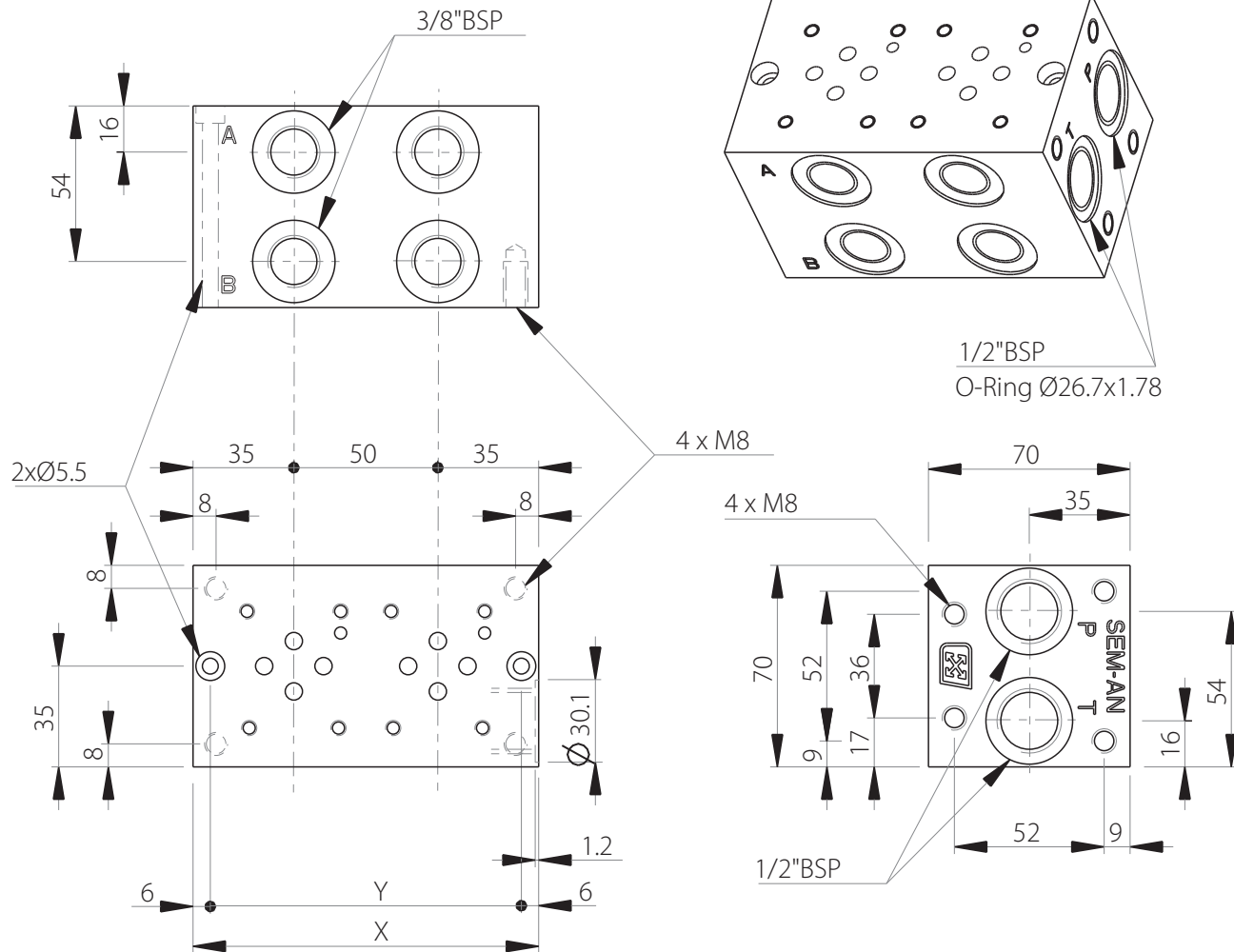
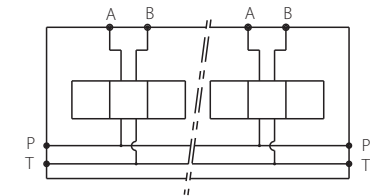


# MR3

Side ports manifold  
CETOP 3 / NG6



Stations	X	Y	Cast iron (kg)	Al (kg)
1	70	58	2.10	0.80
2	120	108	3.60	1.40
3	170	158	5.10	2.00
4	220	208	6.60	2.60
5	270	258	8.10	3.20
6	320	308	9.60	3.80
7	370	358	11.10	4.40
8	420	408	12.60	5.00



Technical specifications	
Material	GGG250
Surface treatment	Protalloy - Zinc-Nickel Electroplating
Pressure	300 bar max (Cast iron) - 250 bar max (Al)
Flow rate	60 L/min max

Designation code: MR - 3 - \* . G

MECABOR

CETOP 3  
side ports

G : ports BSP

Station number