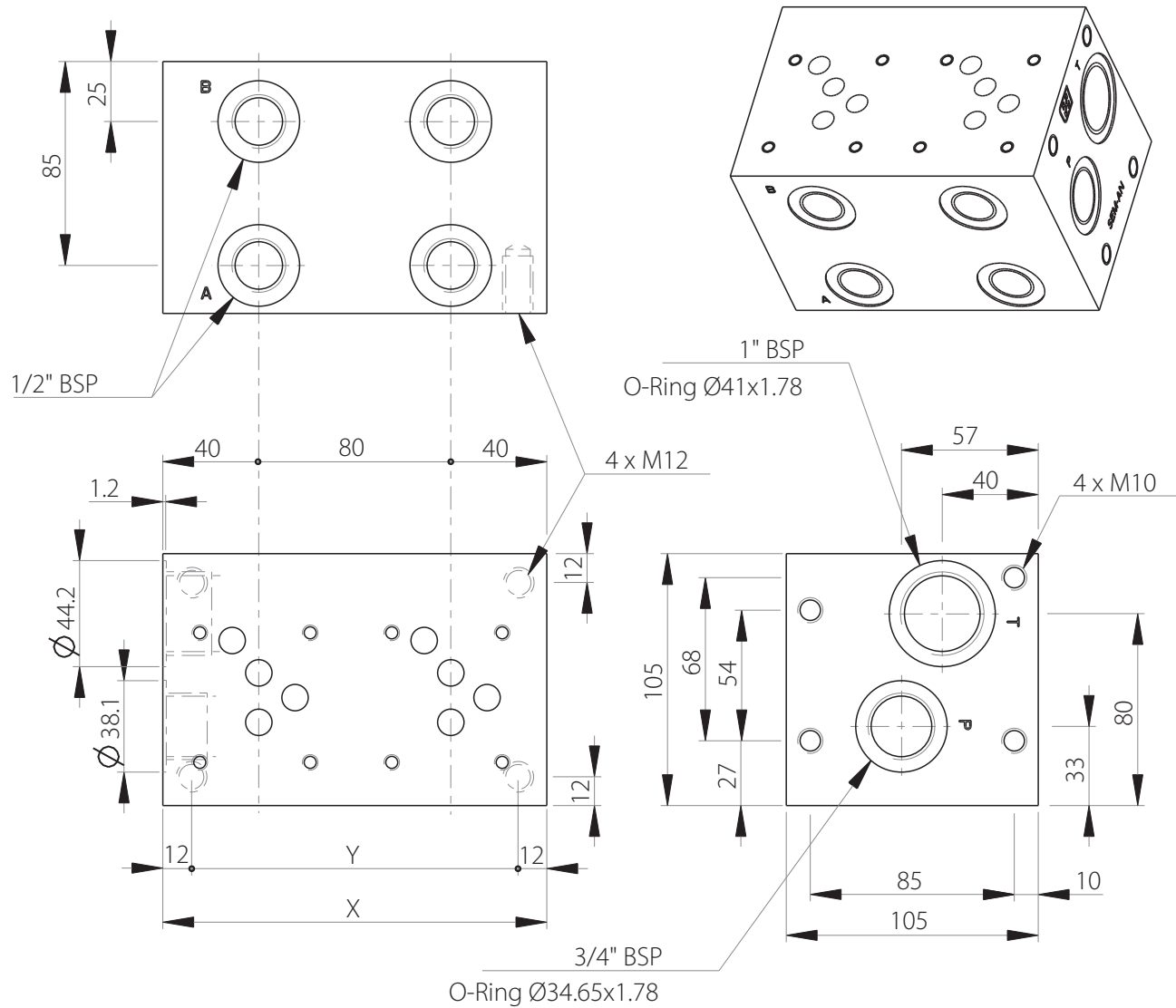
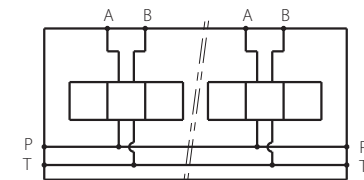


MR5

Side ports manifold
CETOP 5 / NG10



Stations	X	Y	(kg)
1	80	56	5.80
2	160	136	11.30
3	240	216	17.00
4	320	296	22.70
5	400	376	28.50
6	480	456	34.20
7	560	536	39.90
8	640	616	45.60



Technical specifications	
Material	GGG250
Surface treatment	Protalloy - Zinc-Nickel Electroplating
Pressure	300 bar max
Flow rate	120 L/min max

Designation code: **MR - 5 - * . G**

MECABOR

CETOP 5
side ports

G : ports BSP

Station number