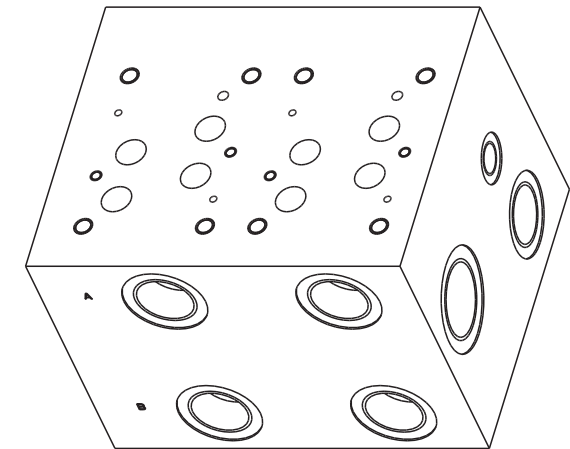
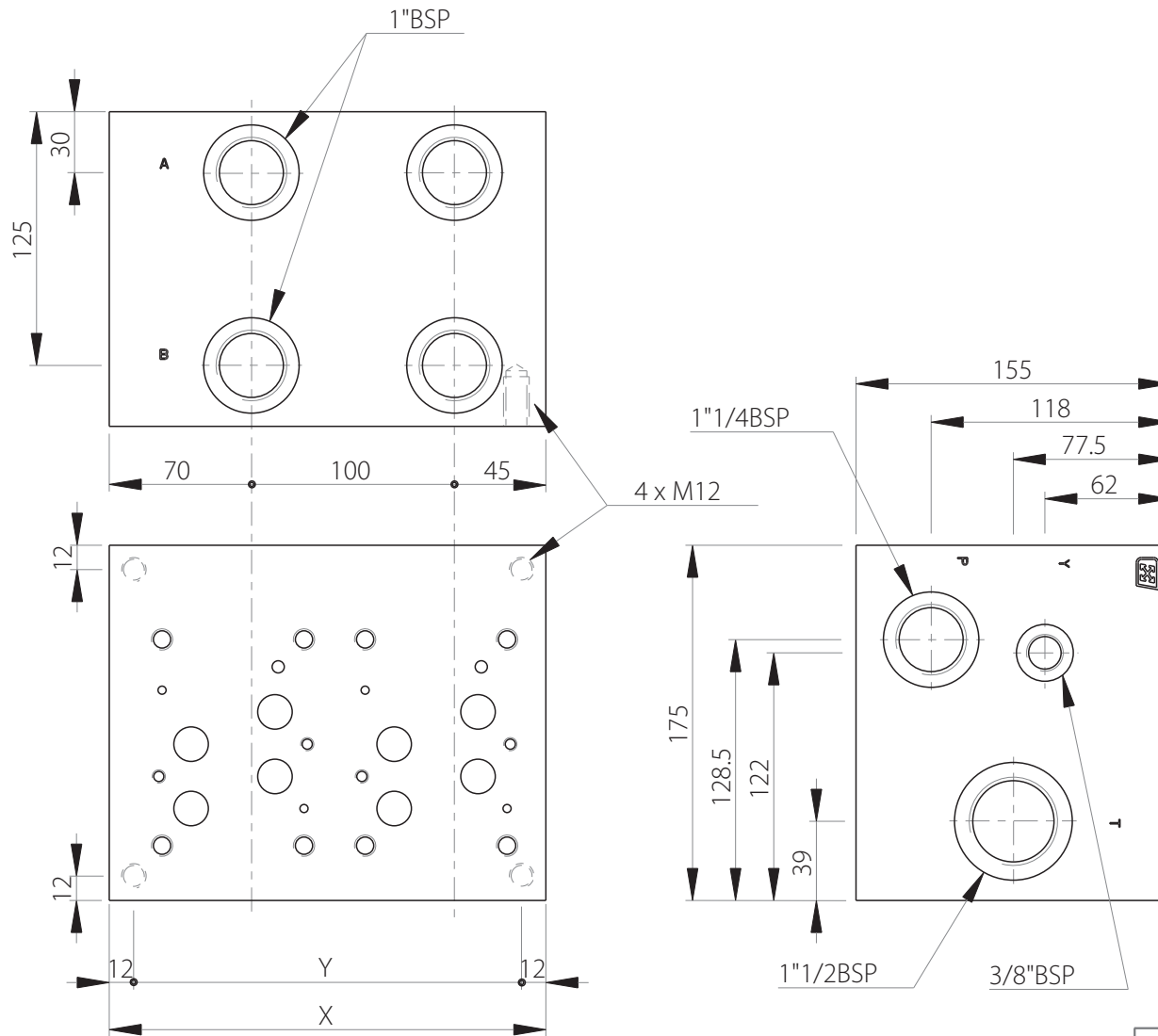
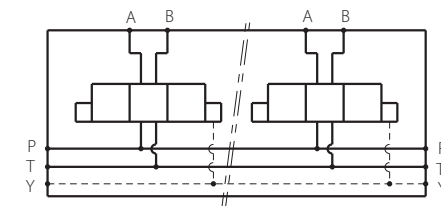


# MR7- 1"

Side ports manifold with 1" ports  
CETOP 7 / NG16



Stations	X	Y	(kg)
1	115	91	19
2	215	191	35
3	315	291	51



Technical specifications	
Material	GGG250
Surface treatment	Protalloy - Zinc-Nickel Electroplating
Pressure	300 bar max
Flow rate	270 L/min max

Designation code:

MR - 7 - \* - 1" G

MECABOR

CETOP 7  
side ports

Station number

G : ports BSP

Ports