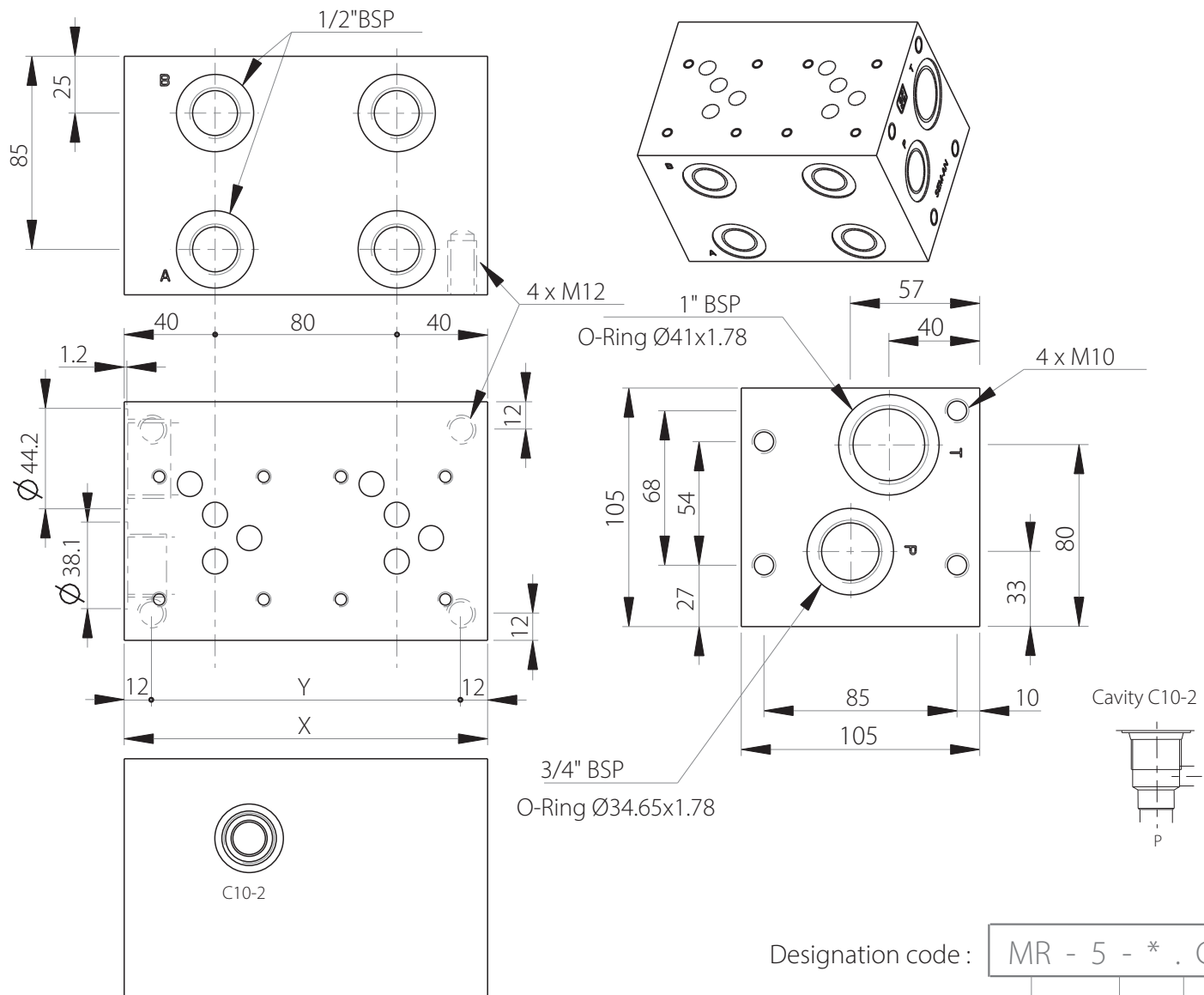
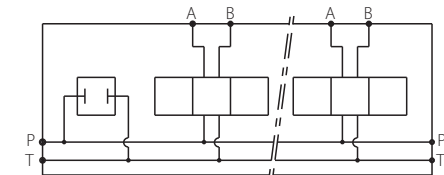


MR5/C10-2

Side ports manifold + C10-2 cavity
CETOP 5 / NG10



Stations	X	Y	(kg)
1	80	56	5.70
2	160	136	11.30
3	240	216	16.90
4	320	296	22.60
5	400	376	28.40
6	480	456	34.10
7	560	536	39.80
8	640	616	45.50



Technical specifications	
Material	GGG250
Surface treatment	Protalloy – Zinc-Nickel Electroplating
Pressure	300 bar max
Flow rate	120 L/min max

