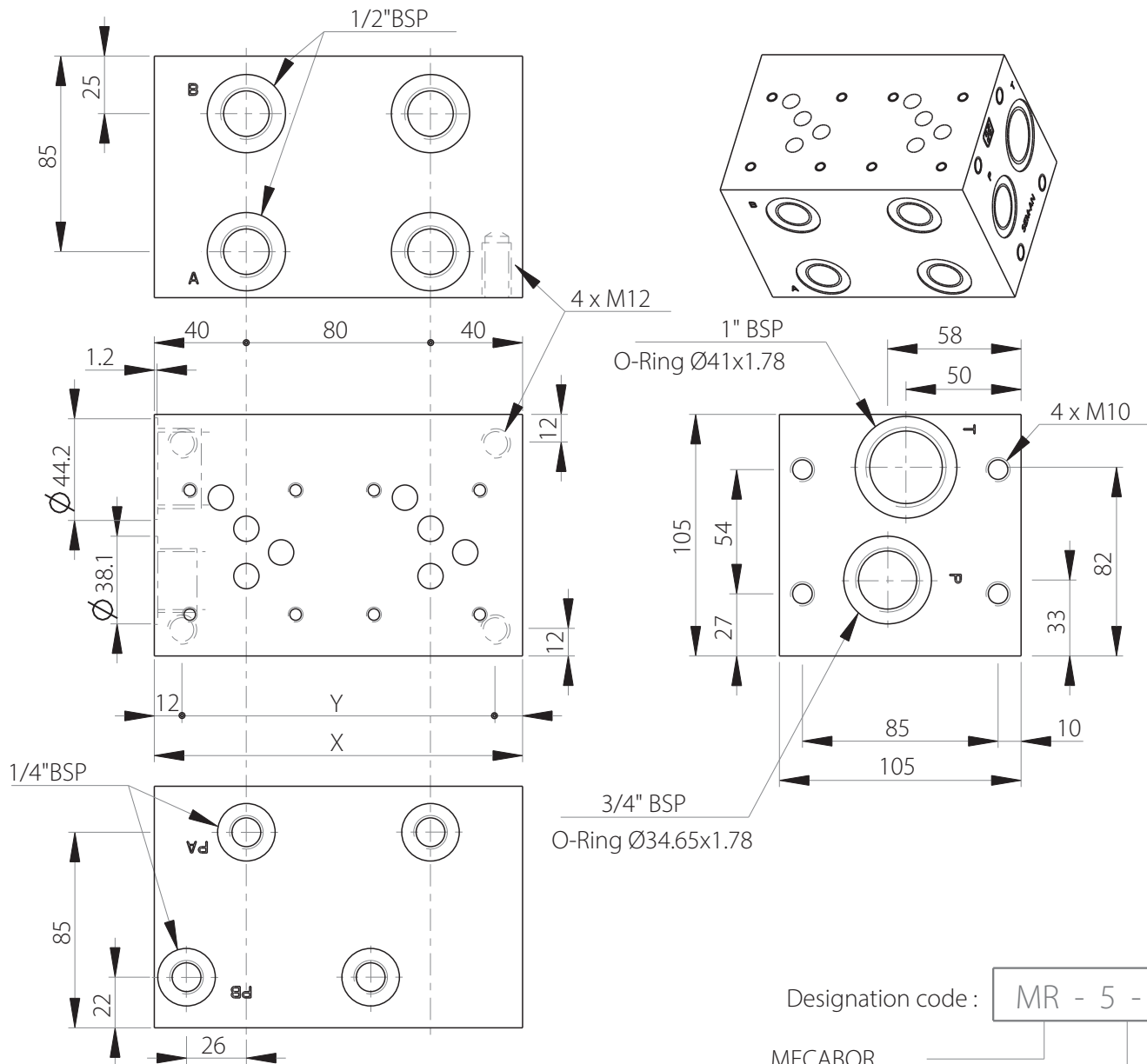
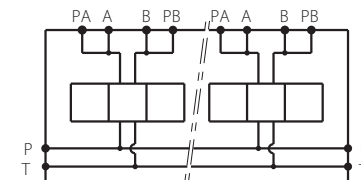


MR5-PAB

Side ports manifold
+ pressure test points on A and B
CETOP 5 / NG10



Stations	X	Y	(kg)
1	80	56	5.80
2	160	136	11.30
3	240	216	17.00
4	320	296	22.70
5	400	376	28.50



Technical specifications

Material	GGG250
Surface treatment	Protalloy - Zinc-Nickel Electroplating
Pressure	300 bar max
Flow rate	120 L/min max

Designation code:

MR - 5 - * . G . P . AB

MECABOR

CETOP 5
side ports

Station number

Pressure test points
on A and B

G : ports BSP