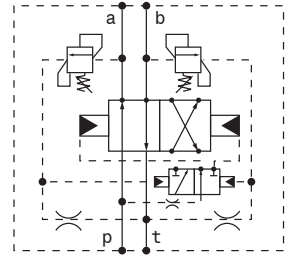
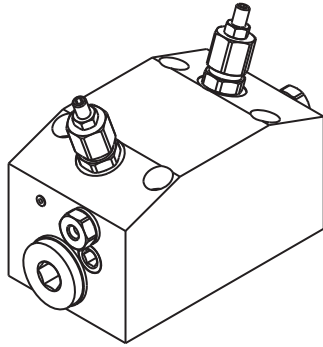


Valvola direzionale automatica - luce 10
Automatic directional valve - NG10

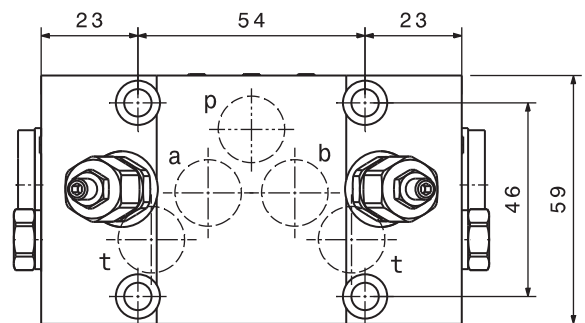
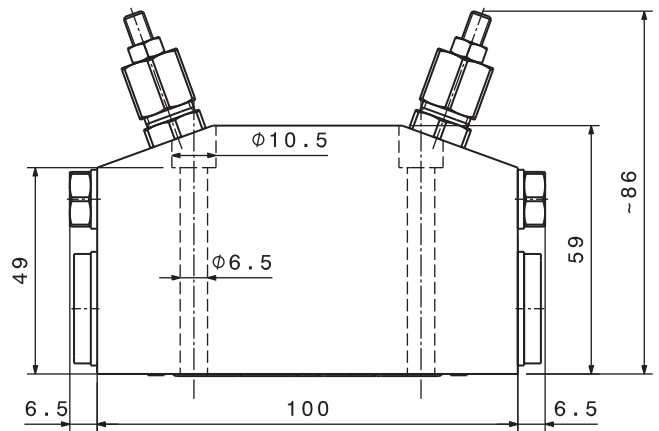
mod. VAD-F-C5

Corpo in ghisa
Cast iron body



Portata massima <i>Max flow</i>	70 l/min 18.5 gpm
Pressione massima <i>Max pressure</i>	250 bar 3600 psi
Taratura standard <i>Standard setting</i>	180 bar 2600 psi
Campo di taratura <i>Adjustment pressure range</i>	40 ÷ 250 bar 580 ÷ 3600 psi
Portata minima <i>Min flow</i>	6 l/min 1.6 gpm

Dati e tarature ottenuti usando olio con viscosità 30 cSt a 50°C <i>Performances and calibrations are carried out by using hydraulic oil with 30 cSt viscosity at 50°C</i>	
Viscosità consigliate <i>Recommended viscosity</i>	10 ÷ 420 cSt
Temperature di lavoro <i>Working temperature</i>	-20 ÷ +90 °C
Filtrazione assoluta <i>Absolute filtration</i>	25 μ



Sigla di ordinazione / Ordering code

VAD-F-C5

Modello
Type