

Log Splitter Valves

Available in various sizes with Kick off and regenerative function if required

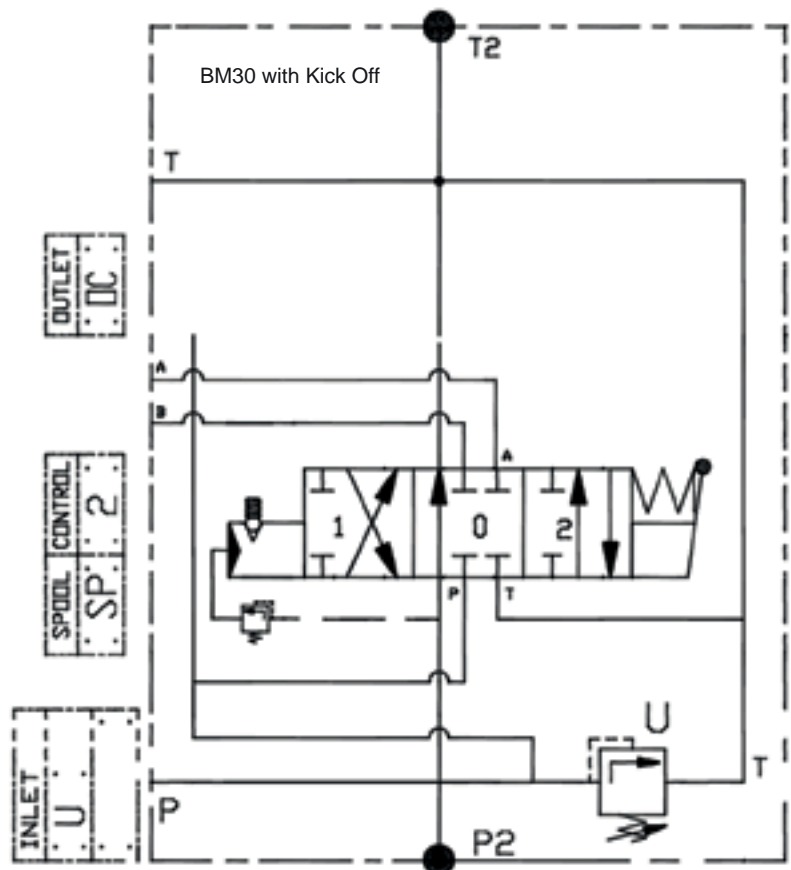
Kick off valves



Single lever valves with kick off work when the operator moves the lever to send the cylinder out to split a log, then moves the lever to retract the cylinder after the log is split, the cylinder will return to its full retraction and then the valve lever will 'automatically' return to the neutral rest position. The 'kick off' pressure in the valve is preset to 70 bar. The valves can also be supplied with a regenerative spool giving faster extension speed for the cylinder.

Valve with Kick off function	Maximum flow l/min	Kick off Pressure bar	Maximum Pressure bar	P&T Ports bsp	A&B Ports bsp
BM30 (16-18) NOVNR GK/MO SPKOA2KO(70)	40	70	300	3/8"	3/8"
BM50/1 GK MO SOKOA2KO(70)	60	70	300	1/2"	1/2"
BM100 ZB NOVNR GK/MOA1KO	90	70	300	3/4"	3/4"

Valve with Kick off and regenerative spool	Maximum Inlet flow l/min	Maximum Regenerative flow l/min	Kick off Pressure bar	Maximum Pressure bar	P&T Ports bsp	A&B Ports bsp
BM45 ZB NOVNR GKW/MO Z26KO	45	70	70	300	1/2"	1/2"
BM100 ZB NOVNR GK/MO Z26KO	70	100	70	300	3/4"	3/4"



Log Splitter Valves

Auto speed function

Auto-Speed valves

When the lever is first moved to extend the cylinder it moves at a much higher speed towards its full extension. When the cylinder nears full extension the Auto-speed valve automatically reduces the flow and thus decreases the speed of the cylinder.

This enables cylinder extension at high speed and low pressure then at the end of the stroke low speed with high pressure.



Valve with Auto-Speed unction	Maximum Inlet flow l/min	Maximum Regenerative flow l/min	Maximum Pressure bar	P&T Ports bsp	A&B Ports bsp
BM70/1 GKB/MC S6/AUTOSPEED	60	90	300	3/4"	1/2"

