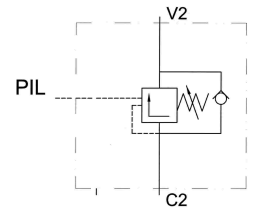
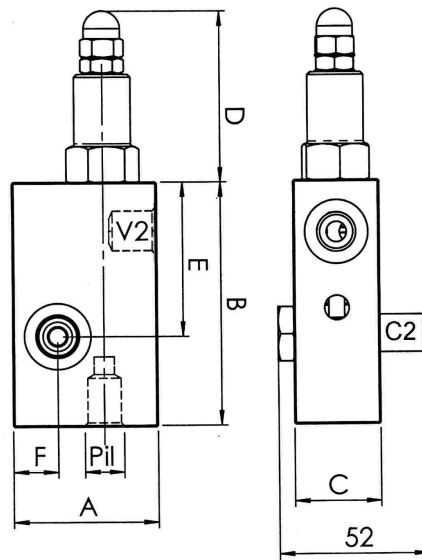
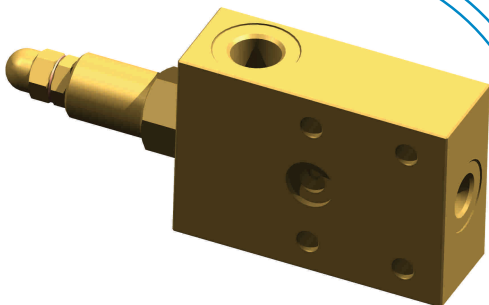


**OWC SE C**



Codice <i>Code</i>	Modello <i>Model</i>	Portata max (l/min) <i>Flow max (l/min)</i>	Pressione max <i>Max Pressure</i>	Filettature V1 C1 V2 C2 <i>Threds</i>	Filettature PIL <i>Threds PIL</i>	mm						Taratura standard VL (Q=5 l/min) <i>Standard setting VL (Q=5 l/min)</i>	Campo di taratura Pressure <i>Setting range</i>	Rapporto di pilotaggio <i>Pilot ratio</i>	Curve perdite di carico <i>Pressure drop curves</i>
						A	B	C	D	E	F				
030547	OWC SE C 14 U	20	250 bar	1/4" GAS V2 C2	1/4" GAS PIL	50	85	30	60	53,5	20,5	160 bar	60÷200 bar	4,25 / 1	Z
030622	OWC SE C 14 K	20	350 bar	1/4" GAS V2 C2	1/4" GAS PIL	50	85	30	60	53,5	20,5	250 bar	100÷350 bar	4,25 / 1	Z
030548	OWC SE C 38 U	35	250 bar	3/8" GAS V2 C2	1/4" GAS PIL	50	85	30	60	53,5	20,5	160 bar	60÷200 bar	4,25 / 1	Z
030623	OWC SE C 38 K	35	350 bar	3/8" GAS V2 C2	1/4" GAS PIL	50	85	30	60	53,5	20,5	250 bar	100÷350 bar	4,25 / 1	Z
030549	OWC SE C 12 U	50	250 bar	1/2" GAS V2 C2	1/4" GAS PIL	50	85	30	60	53,5	20,5	160 bar	60÷200 bar	4,25 / 1	Z
030624	OWC SE C 12 K	50	350 bar	1/2" GAS V2 C2	1/4" GAS PIL	50	85	30	60	53,5	20,5	250 bar	100÷350 bar	4,25 / 1	Z
030727	OWC SE F 14 U	20	250 bar	1/4" GAS V2 C2	1/4" GAS PIL	60	85	30	60	40	6,5	160 bar	60÷200 bar	4,25 / 1	Z
030741	OWC SE F 14 K	20	350 bar	1/4" GAS V2 C2	1/4" GAS PIL	60	85	30	60	40	6,5	250 bar	100÷350 bar	4,25 / 1	Z
030728	OWC SE F 38 U	35	250 bar	3/8" GAS V2 C2	1/4" GAS PIL	60	85	30	60	40	6,5	160 bar	60÷200 bar	4,25 / 1	Z
030742	OWC SE F 38 K	35	350 bar	3/8" GAS V2 C2	1/4" GAS PIL	60	85	30	60	40	6,5	250 bar	100÷350 bar	4,25 / 1	Z
030729	OWC SE F 12 U	50	250 bar	1/2" GAS V2 C2	1/4" GAS PIL	70	90	30	60	40	6,5	160 bar	60÷200 bar	4,25 / 1	Z
030740	OWC SE F 12 K	50	350 bar	1/2" GAS V2 C2	1/4" GAS PIL	70	90	30	60	40	6,5	250 bar	100÷350 bar	4,25 / 1	Z



**OWC SE F**

