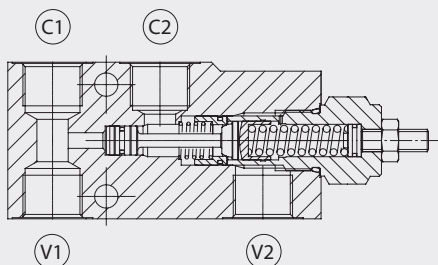
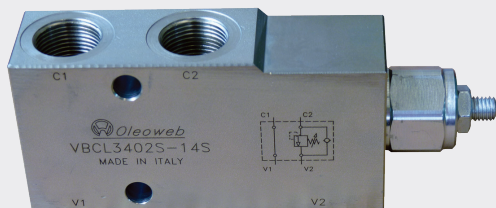




# VBCL Valvole overcenter singole per centro aperto

## Single counterbalance valves for open center



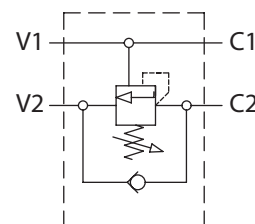
### Dati tecnici

#### Technical data

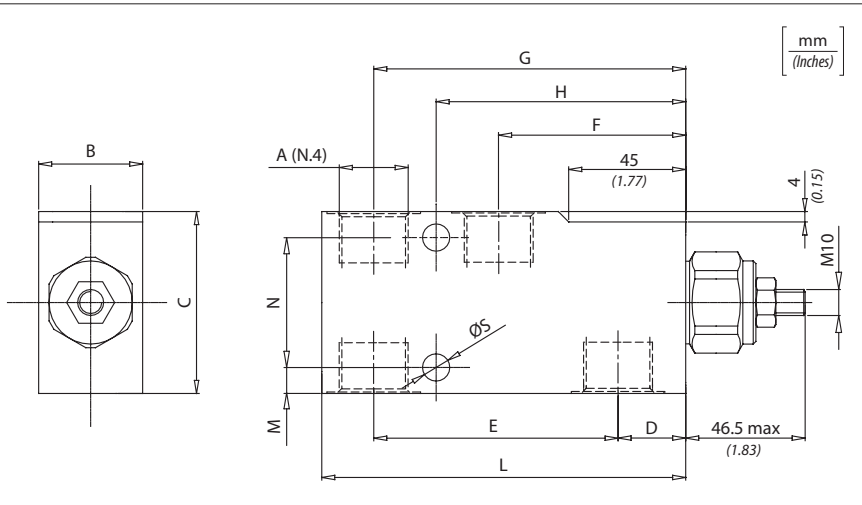
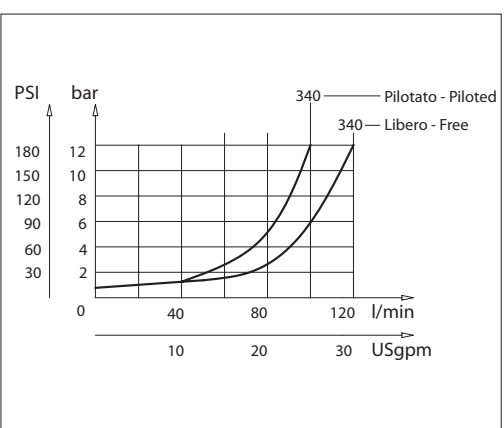
Oil idraulico Mineral oil	ISO 6743/4 DIN 51524
Viscosità fluido Fluid viscosity	10-500 mm <sup>2</sup> /s 45 to 2000 ssu (6 to 420 cSt)
Classe di contaminazione max con filtro Max contamination index with filter	ISO 4406:1999 Classe 19/17/14
Temperatura del fluido Fluid temperature	-20°C +80°C -4°F +176°F
Temperatura ambiente Ambient temperature	-20°C +50°C -4°F +122°F

È indispensabile l'utilizzo di un filtro (filtrazione consigliata 15 micron) per proteggere la valvola

It is necessary a filter use to protect the valve (advised filtration 15 micron)



### Perdite di carico Pressure drops



### Codice ordinazione / Ordering code

## VBCL - X - Y - K - I

X	Dimensione Size	Y	Molla Spring	Incremento pressione al giro Press. increase	Taratura standard Std. setting (Q=5 l/min)	K	Materiale Material	Rapporto di pilotaggio Pilot ratio
340	BSPP 3/4	2	60/350 bar (850/3500 PSI)	120 bar/al giro (1700 PSI/turn)	350 bar (5000 PSI)	S	Corpo in acciaio (Steel body)	1:6.2

### Caratteristiche tecniche

#### Technical performances

Code Code	A	Portata max Max Flow l/min-USgpm	Pressione Max Max pressure bar/PSI	B	C	D	E	F	G	H	L	M	N	S	Peso approssimativo Approx weight Kg / lb
VBCL340	BSPP 3/4	120 (31)	350 (5000)	40 (1.57)	70 (2.75)	20 (0.78)	94 (3.7)	72 (2.83)	120 (4.72)	96 (3.78)	140 (5.51)	50 (1.96)	10 (0.39)	10,5 (0.41)	3 (6.6)